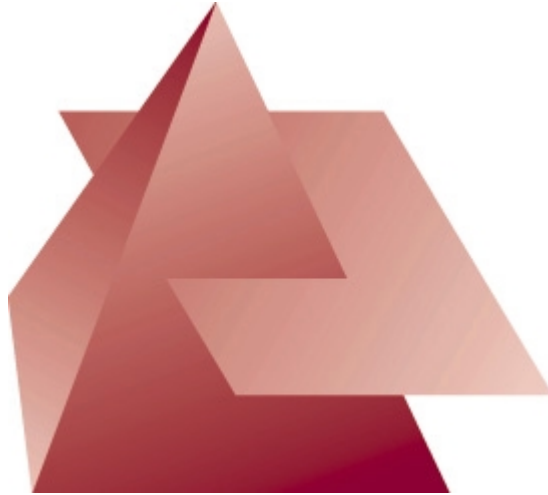


CASEDOK™ WALKER for COOL:Gen
Version 4.0



This manual has been created with the **CASEDOK™ DEVELOPER** workstation.

© Copyright 1994-2001 by Deron AG. All Rights Reserved. CASEDOK is a trademark of Deron AG. COOL:Gen is a trademark of Computer Associates International, Inc. Windows 95/98/NT/2000 and Internet Explorer are trademarks of Microsoft Corporation, Netscape is a trademark of Netscape Communications Corporation.

Table of Contents

- 1 Contact Deron**
- 2 What is CASEDOK WALKER?**
- 3 Installation and Configuration**
- 4 How to start WALKER**
- 5 How to use WALKER**

1 Contact Deron

Address: **Deron AG**
Webergutstrasse 4
3052 Zollikofen
Switzerland

Phone: +41 31 910 44 55
Fax: +41 31 910 44 49

Email: deron@dial.eunet.ch

Internet: www.deron.com

In USA and CANADA, contact our partner:

Address: **CANAM Software Labs, Inc.**
200 Matheson Blvd. West Suite 103
Mississauga, Ontario
Canada L5R 3L7

Phone: (905) 712-8985
Fax: (905) 712-0043

Email: support@canamssoftware.com

Internet: www.canamssoftware.com

2 What is CASEDOK WALKER?

CASEDOK WALKER is a very useful encyclopedia tool to inspect COOL:Gen model data. It helps developers to encrease their understanding of the COOL:Gen metamodel and supports them in building sophisticated reports with DEVELOPER. It is also very helpful to locate missing information in corrupt encyclopedias.

CASEDOK WALKER allows easy navigation around in a model, supplying clear information in a hierarchical tree view. It displays the existing associations between occurrences of objects and the object properties. The user can open several WALKER's simultaneously working on the same or different models. From the WALKER application, walk path information can be copied and pasted directly into DEVELOPER reports.

CASEDOK WALKER is fully integrated in CASEDOK RUNNER and CASEDOK DEVELOPER and works with models on the Workstation, CSE or CE/MVS, eliminating the need for downloading subsets.

3 Installation and Configuration

The installation of CASEDOK products is described in the CASEDOK RUNNER manual. Please refer to chapter [Installation and Configuration](#) in the **CASEDOK RUNNER User's Guide**.

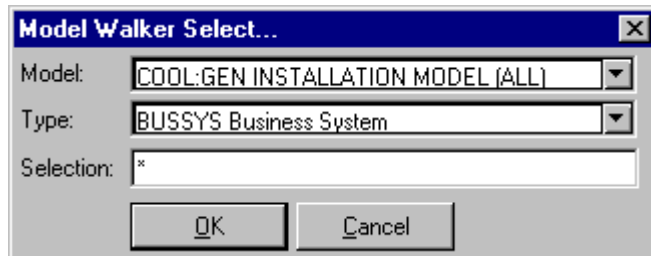
4 How to start WALKER

CASEDOK WALKER can be started in different ways:

| | | |
|---|---|--|
| <p>From the Windows Start menu: Select <WALKER> from the Windows Start menu to launch the application. The 'Model Walker selection' window comes up with an empty model selection.</p> | <p>From the <u>RUNNER</u> module: Select <WALKER> from the <View> menu to launch the application. The 'Model Walker selection' window comes up with the model parameters of the currently active report in the job.</p> <p>Using WALKER in combination with RUNNER is very helpful. Before running a report, you can see for which objects the report will be created.</p> | <p>From the <u>DEVELOPER</u> module: Select <WALKER> from the <View> menu to launch the application. The 'Model Walker selection' window comes up with the model parameters of the currently active report context. If there is no report open, the initial selection parameters are used.</p> <p>During navigation in WALKER, you can cut and paste metamodel information directly into a report definition.</p> |
|---|---|--|

You can start as many WALKER applications as you need!

All of those WALKER's will be active at the same time and may even run on different models.



Model: Select a model from the list.

Type: Select the object type from the list or enter a search string to find the object type directly.

Selection: Enter data restriction on selected object type: Selection is not case-sensitive, but blanks must be substituted by underscores (_). Wildcards (*,?) are supported. Multiple selections must be separated by a semicolon (;).

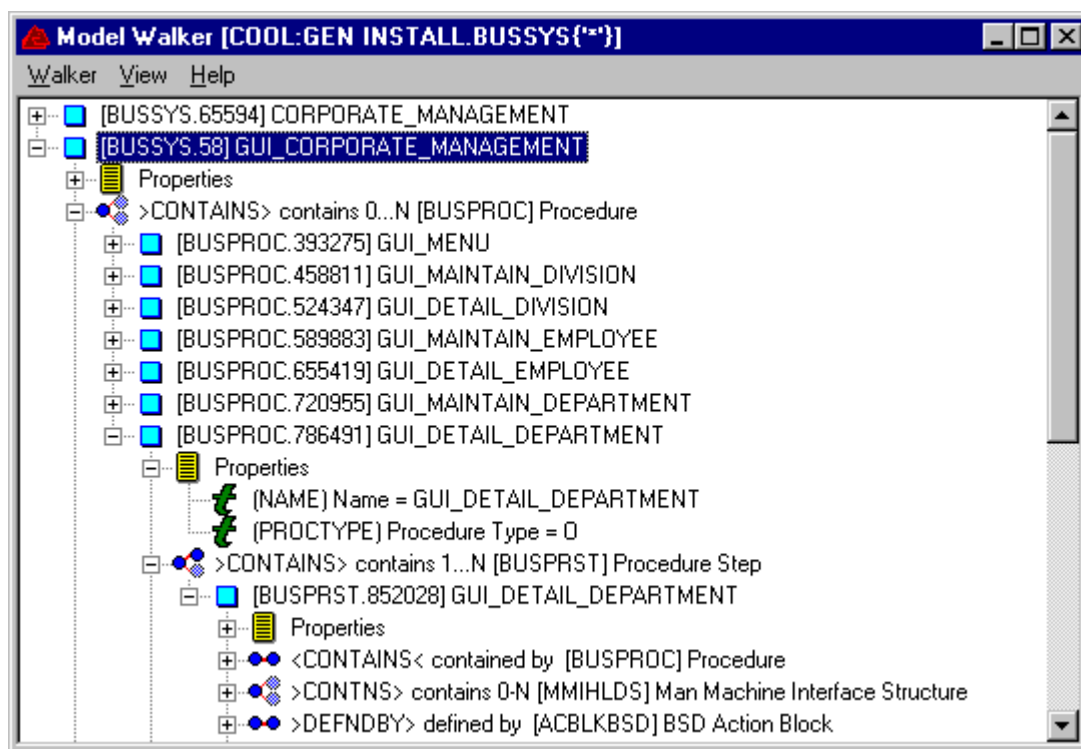
Example: 'S*;Team?;*t

5 How to use WALKER

The Model Walker window shows the object instances of the selected object type. From these entry points you can navigate around in the model by expanding associated objects. Every expansion accesses the model dynamically. At any time you can call the [Model Walker selection window](#) to open another model or to change the entry point.

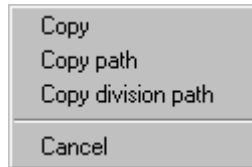
Only existing information is displayed. For example, if an entity has no attributes, the corresponding association is not displayed. This makes it easier to find the required information or to locate missing data.

Each object is identified by the mnemonic name, the object ID and the name (if available). Associations are displayed with their direction and cardinality information. Properties are displayed with their name and mnemonic.



| Menu | Items |
|--------|--|
| Walker | Select: Reopens the Model Walker selection window Close: Closes this Walker application |
| View | Application view: Chain to related CASEDOK applications. From this menu you can start CASEDOK RUNNER , CASEDOK DEVELOPER or open the 'Settings' window to change the configuration parameters. For configuration refer to chapter Installation and Configuration in the CASEDOK RUNNER User's Guide . |
| Help | Online Help system for CASEDOK WALKER and License information ('About'). |

If you use WALKER in cooperation with **CASEDOK DEVELOPER**, you can copy and paste walk path information directly into a report definition using the **right mouse button**. The context menu provides different commands to copy metamodel information to the clipboard, from where it can be pasted to the current report. Some of the cell commands are sensitive to the cell context. Commands not available in a certain context are disabled.



| Command | Description |
|--------------------|---|
| Copy | Copies the current object type, association type or property type to the clipboard. |
| Copy path | Copies the current context path to the clipboard using the specific object type information. |
| Copy division path | Copies the current context path to the clipboard using the generic division type information. |

INDEX

| | |
|--------------------------------------|-----|
| Contact Deron | \$1 |
| How to start WALKER | \$4 |
| How to use WALKER | \$5 |
| Installation and Configuration | \$3 |
| What is CASEDOK WALKER? | \$2 |